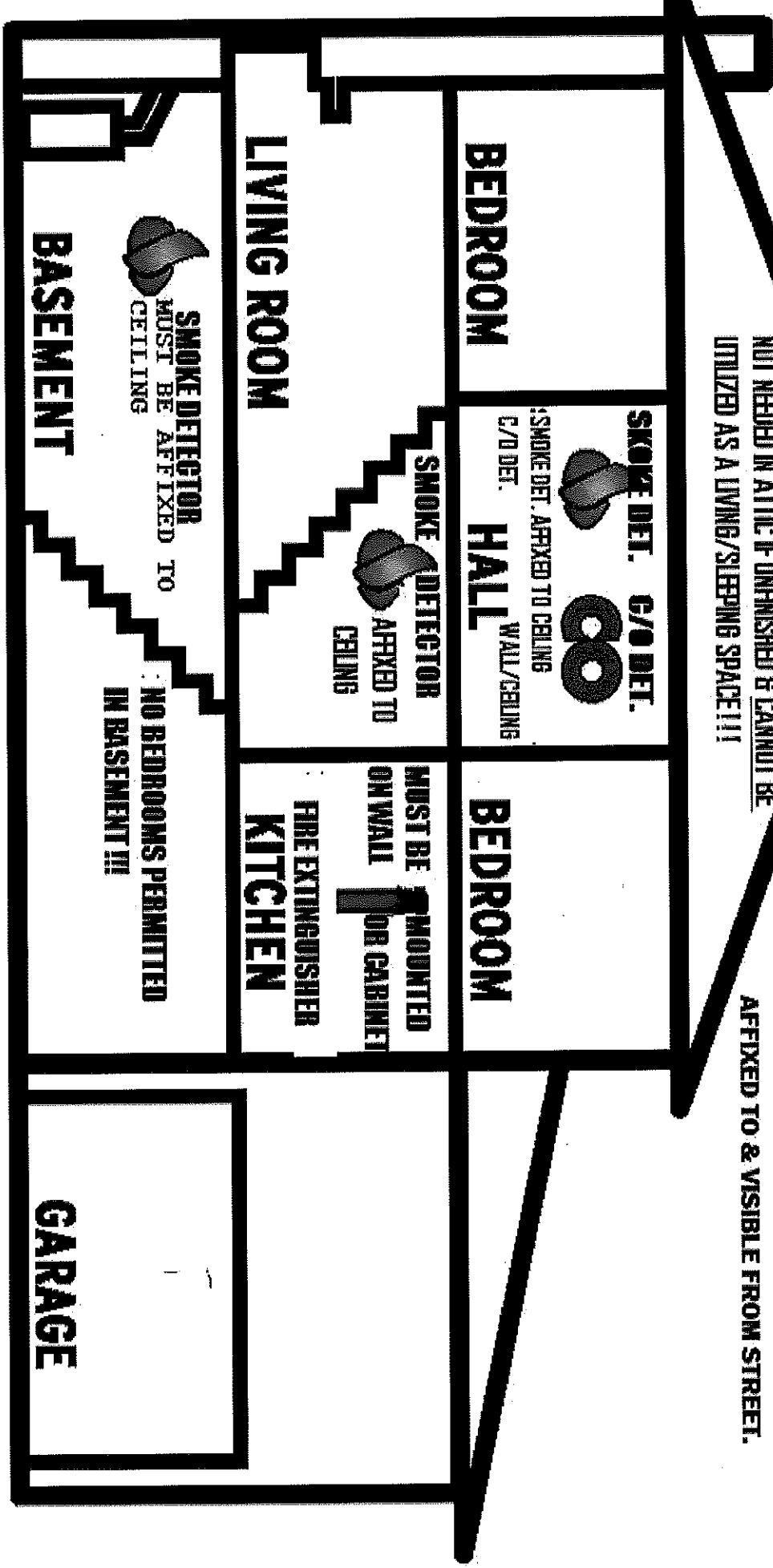


**TOWNSHIP OF HADDON, NJ - OFFICE OF CONSTRUCTION & FIRE INSPECTION
 REQUIREMENTS FOR SMOKE DETECTOR, CARBON MONOXIDE DETECTOR & FIRE EXTINGUISHER COMPLIANCE**

ATTIC
SMOKE DETECTOR
 NOT NEEDED IN ATTIC IF UNFINISHED & CANNOT BE
 UTILIZED AS A LIVING/SLEEPING SPACE!!!

**ADDRESS # MUST BE AFFIXED TO FRONT OF THE
 DWELLING, 4" MINIMUM NUMERICAL CHARACTERS &
 MUST BE IN CONTRASTING COLOR TO SURFACE BEING
 AFFIXED TO & VISIBLE FROM STREET.**



Smoke Alarm



Fire Extinguisher



Carbon Monoxide Alarm

ADDRESS